



Made in Britain

## **Case Study, Sonic Driver Ltd, Ultrasonic clamp-on flowmeters, University of Warwick, Chilled Water System, near Coventry.**

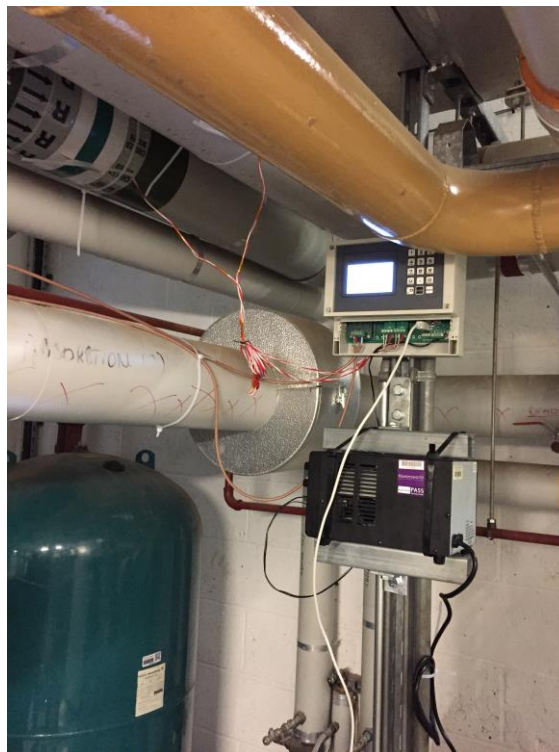
Preliminary trials with the Sonic Driver Ltd Pocket handheld clamp-on ultrasonic flowmeter on the chilled water supply at one of the University of Warwick's new buildings were successfully undertaken and convinced those involved of the need for a permanent solution.

A Fixed, wall mounted, clamp-on, ultrasonic flowmeter installation was made. A small area of insulation was removed from the 114 mm diameter steel pipe, and the engineers were able to quickly commission the meter and start measuring flow.

Auxiliary inlet and outlet fluid temperature measurements, made using PT100 sensors allowed the meter to be configured to measure heat quantity.

Readings were consistent with expectations and gave the engineers confidence that the flow rate of chilled water was within the expected values.

By analysing the flow rate and cooling provided to a number of valuable assets the performance of the chilled water system can be optimised.



**Copyright Sonic Driver Ltd 2023**